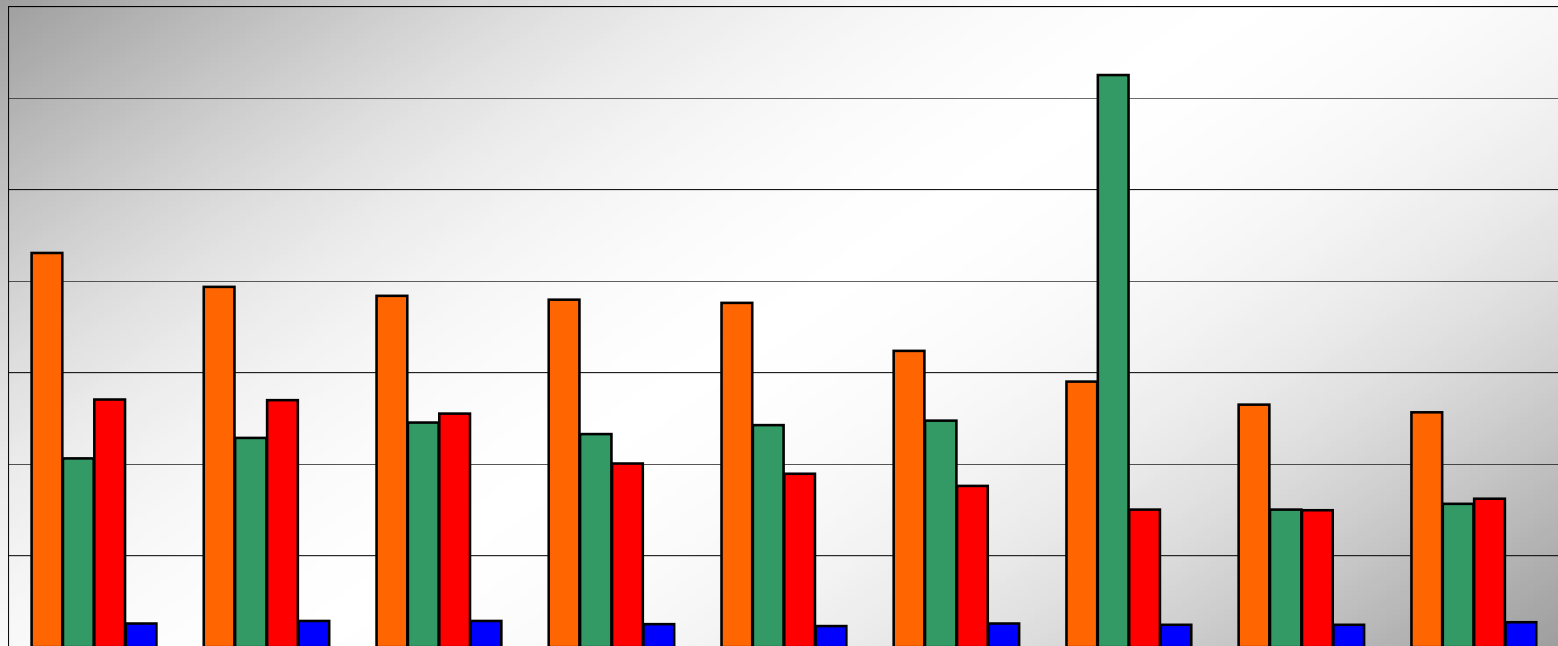


Legal Division Statistics

(Number of Cases Files by Division and Year)



	2006	2005	2004	2003	2002	2001	2000	1999	1998
■ <i>Civil</i>	8613	7870	7678	7594	7519	6471	5798	5306	5139
■ <i>Domestic</i>	4127	4576	4906	4662	4860	4954	12500	3013	3137
■ <i>Criminal</i>	5414	5401	5103	4013	3791	3518	3002	2993	3245
■ <i>Appeals</i>	514	575	577	508	461	516	483	492	545